

What is Pervious Pavement?

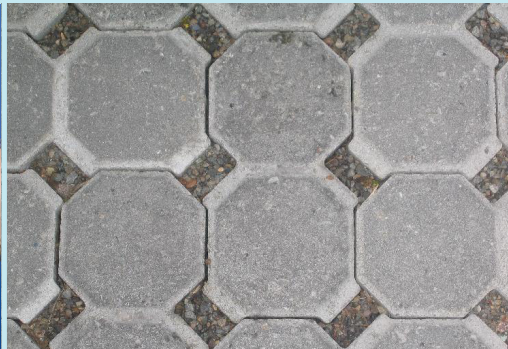
Pervious (or permeable) pavement is a type of Low Impact Development (LID) stormwater management Best Management Practice (BMP)

BMPs can be utilized in residential and commercial settings to reduce the need for stormwater transportation and treatment, reduce flooding and improve water quality!

Pervious pavement allows stormwater (and even snow!) to infiltrate into the ground, eliminating runoff from parking lots & driveways, replenishing ground water supplies and providing clean water to local rivers, streams, wetlands, lakes, and groundwater



Pervious pavement at work
(www.concretedecor.net)



Pervious pavers
(duckhendge.uoregon.edu)



A parking lot of pervious pavement
(Megan Riechmann)

Pervious pavement comes in many forms: pervious asphalt and concrete pavement, paving systems of brick or concrete blocks (the spaces between are filled with gravel or plantings), or even plastic grids for reinforced turf grass!

Layers of infiltration materials are needed below the surface for: filtering, cleaning, and even storing stormwater before it is absorbed by the soil below or piped to another retention location

Periodic cleaning of the porous spaces is needed to maintain drainage



Pervious pavement & snow
(www.perviouspavement.org)



Signage on pervious pavement
(Megan Riechmann)



A grass paving system
(www.groundfabrics.org)

